

Intelligent Patch Panel Solution

Manage ICT Infrastructure in Real-time

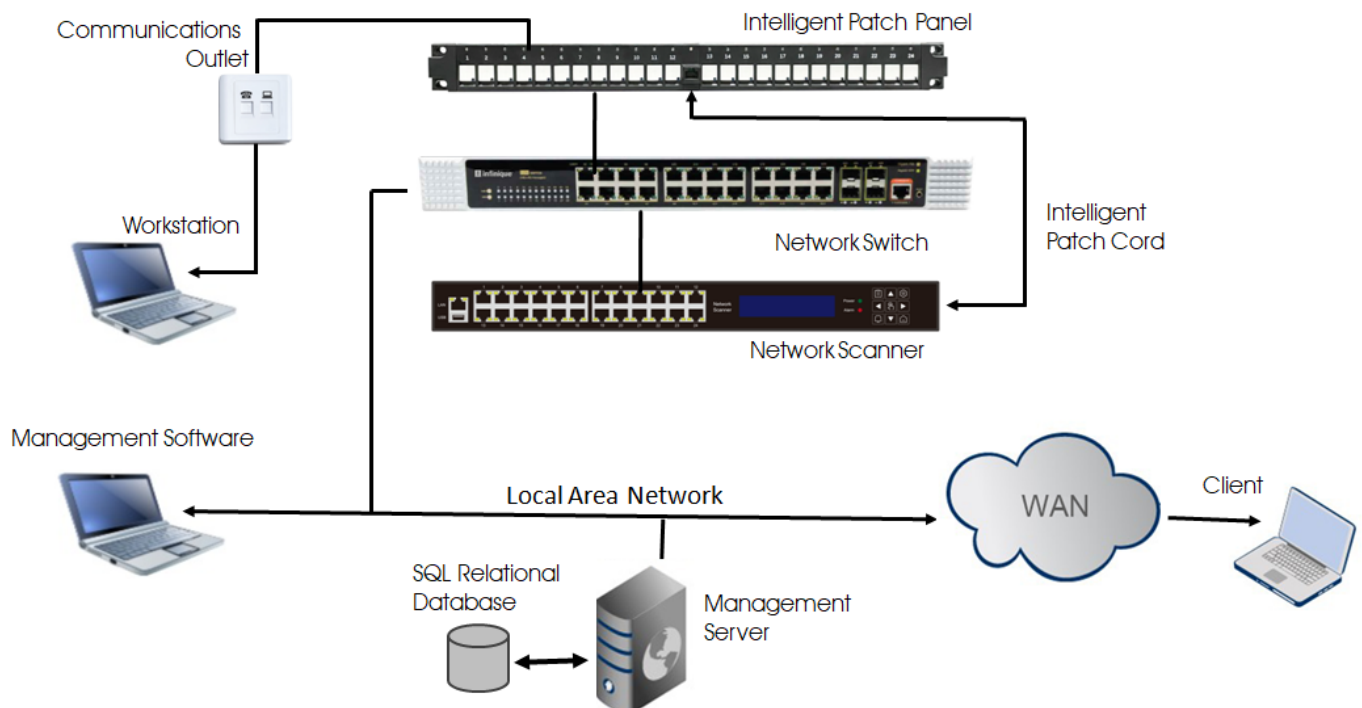
Infinique's Intelligent Patch Panel Solution for Copper and Fiber Structured Cabling System provides an automated and versatile remote management of ICT infrastructure. The system includes smart sensing Patch Panels which connect to a Network Scanner that is centrally managed by application software.

The scanner records any unauthorized connection, disconnection, malfunction of components and reports these in real-time to the system application software which is hosted on the local area network. This application software has a graphical user interface that provides digital simulation of the entire rack or cabinet used in a network, making it easy for the IT network administrators and field personnel to troubleshoot and fix connection issues immediately upon any component failure reducing network downtime.

Features and Benefits

- **Auto detection of Patch Cord Status**
Automatically detects the plugging and unplugging of both copper and fiber patch cords
- **Real-time Monitoring**
Port adjustment in terms of moving and updating and connectivity changes are monitored in real-time
- **Event Notification**
Provides notification through LED, alarm, software interface, e-mail and messages for event handling
- **Quick and Easy Network Documentation**
Retrieve information of Network Devices and their locations and cabling infrastructure
- **Extensive Audit Log**
Maintains extensive audit log of historical records and work order that can be queried and exported
- **Standards Compliance**
EN 60950-1; EN 55032; EN 55035; EN 61000-3-2; EN 61000-3-3, ANSI C63.4

SOLUTION OVERVIEW



Intelligent Patch Panel Solution

Manage ICT Infrastructure in Real-time

SYSTEM COMPONENTS



Intelligent Fiber Patch Cord



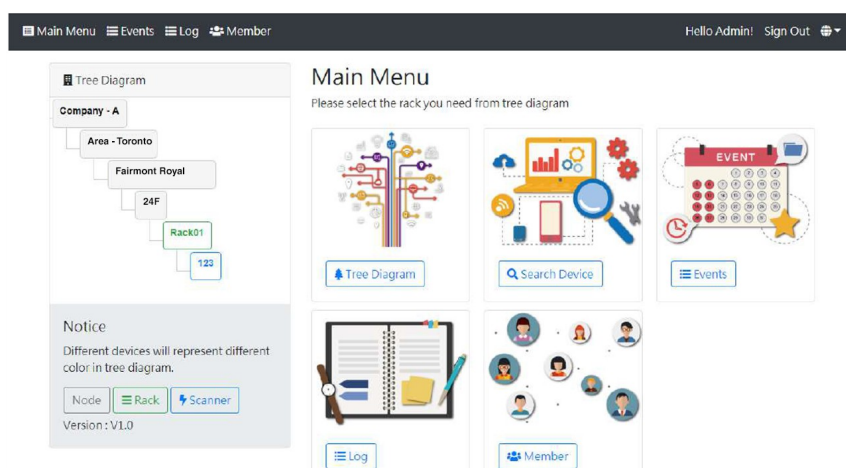
Intelligent Copper Patch Cord



Intelligent Patch Panel Copper and Fiber



Network Scanner



Management Software

Intelligent Patch Panel Solution

Manage ICT Infrastructure in Real-time

TECHNICAL SPECIFICATIONS - NETWORK SCANNER

Class of Equipment	Class 1
Power-on Time	<2.5sec
Efficiency	80% (output power/input power)
Smart Patch Panel Connections	Up to 24 Smart Patch Panel
Patch Panel Mode	Single or Dual Mode
Circuit Protection	Auto reset short circuit protection is available
Loading Adjustment	5%
Overload Protection	Auto reset when power overload threshold
LED Status Indicators	Power On - Green; Data transmission - Yellow

POWER MANAGEMENT

Input Voltage	100V - 240V AC
Input Current	0.6A ~ 1.2A
Power Frequency	50-60 Hz

ENVIRONMENT

Operating Temperature	0°C to 50°C
Operating Relative Humidity	Up to 60%, non-condensing
Storage Temperature	-10°C to 70°C
Storage Relative Humidity	5% - 60%, non-condensing

PHYSICAL CHARACTERISTICS

Material	ABS Polycarbonate and Steel
Flammability Rating	UL 94V0
Dimensions	482 (w) x 300 (d) x 44 (h) mm
Weight	3.5 kg
Mounting Enclosure	19" DIN Rail

STANDARDS COMPLIANCE

Ethernet Interface	IEEE 802.3 10BASE-T IEEE 802.3u 100BASE-TX
Ethernet Speed	10 MB/sec or 100 MB/sec (half duplex or full duplex)
Safety	CE, FCC, RoHS, UL

ORDERING INFORMATION

PART NUMBER	DESCRIPTION
INMPCF24-I	Infinique Intelligent Patch Network Scanner Controller, 24 Ports UL-94V0
INMPCFSW-I	Infinique Intelligent Patch Network Management Software
INPPCF24-I	Infinique Intelligent Patch Panel Cat.6A Shielded 24 Ports UL-94V0
INPC6AHB1GY-I	Infinique Intelligent Patch Cord Cat.6A UTP, UL-94V0, Gray, 1m
INPC6HB1GY-I	Infinique Intelligent Patch Cord Cat.6 UTP, UL-94V0, Gray, 1m
IFPCM3LCLCD1-I	Infinique Intelligent Patch Cord LC-LC Multimode OM3 Duplex LSOH 1M
IFPCM4LCLCD1-I	Infinique Intelligent Patch Cord LC-LC Multimode OM4 Duplex LSOH 1M
INPC6AHB1GYL-I	Infinique Intelligent Patch Cord Cat.6A UTP, ETL Verified, UL-94V0, LSOH, Gray, 1m
INPC6AHB2GYL-I	Infinique Intelligent Patch Cord Cat.6A UTP, ETL Verified, UL-94V0, LSOH, Gray, 2m
INPC6AHB3GYL-I	Infinique Intelligent Patch Cord Cat.6A UTP, ETL Verified, UL-94V0, LSOH, Gray, 3m
IFRMPP24SCS-I	Infinique Intelligent Fiber Patch Panel 24 Port LC Duplex, 48 Cores Termination
IFAPCSMLCLCD3-I	Infinique Intelligent Patch Cord LC-LC-APC Singlemode Duplex LSOH 3M